



Silverdale Normal School
62 Silverdale Road, Hamilton
Phone: 07 856 7604, Mobile: 027 7557917
E-mail: office@silverdale.school.nz
Website: www.silverdale.school.nz

Dear Parents

You're Invited!

Community Picnic - building Whanaungatanga

For the last few years we have hosted a community picnic here at Silverdale. This is great time to meet other families, chat with the staff and build relationships with our school community. We will have time to sit and eat together and hear a little bit about our vision for the year.

Then the teachers will be positioned around the school running various sports and creative activities for children (and families!) to get involved in. The community picnic will be held on Wednesday the 13th March starting at 5.00pm here at school running till around 7.00pm. So please bring your own picnic to share with your family and come along! Our PTG are also providing an opportunity for you to order Pizza and have it delivered straight to school in time for the picnic (a PTG order form for more information will come home later this week).



Swimming

We are so fortunate to have our pool solar heated! We tested the water temp this morning and it was at a lovely 26 degrees! So even though the weather may have turned a little cooler this week, the pool is still warm and inviting! Please

encourage your learners to

pack their swim suits everyday and help us make the most of this amazing asset and essential part of the school curriculum.

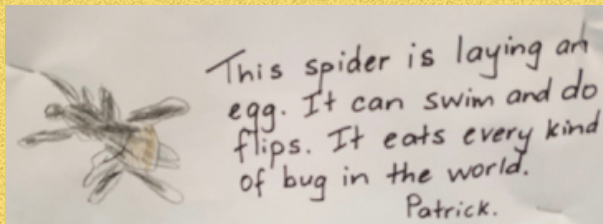
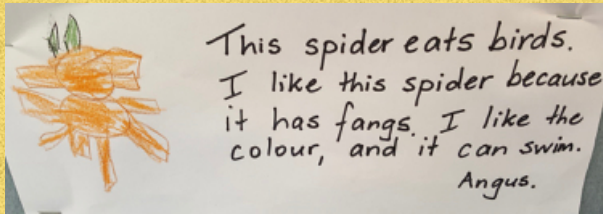


Getting to school

We know that mornings are incredibly busy and at times stressful getting everyone organised and out the door. We really appreciate the effort you all put in to get our Silverdale learners organised and to school on time. The morning sessions in class are really important, and we have found that often the first 30mins of the school day can help set the tone of the day and is a key time for children establishing relationships with their peers and teacher. If for what ever reason your learners are going to be late to school, please can you let us know with either a text, phone call or message using our app. Details for this can be found on our school website by clicking on the yellow button "Absences".

"Making a Positive Difference"

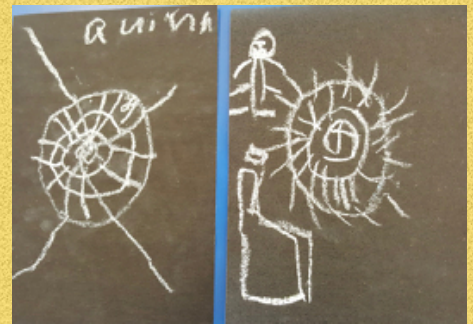
Classroom Item - Room 6/7



This week in room 6/7 as part of our child directed learning we have been finding out about spiders.

We learnt about how some spiders spin their webs

and then some of the learners created a web pattern using white pastel on black paper. We have been looking at lots of books and writing about spiders.



Photolife Studios

A quick heads up that on Wednesday, 13th March, Photolife Studios will be taking portrait shots of the children. We use these photos to add an image to our school data base (the image also appears on school reports). This is separate to our class and individual/sibling portraits that will be taken later in the year.

Violin and Flute / Fife Classes

🎵 Violin Lessons with Celia Griffiths - classes are now filled. Lesson times will be notified shortly. Classes will start in the week beginning 11th March. The cost of hiring a violin from the school is \$60.00 for the year. Lessons cost \$150.00 for the year.

🎵 Flute / Fife Lessons with Catrin Hinton. Classes will be held on Tuesday mornings before school and into the first part of the school day. We can still take new fife and flute students, but enrolments need to be confirmed by the end of this week with Priscilla Thatcher in the School Office. Classes will begin in the week beginning 11th March. Lessons cost \$150.00 for the year.

🎵 Payment can be made in cash at the School Office or online to our school bank account 12-3249-0084477-00.



Māori Art Lessons

Places in our after school Māori art class have been filled for Term 1. This term the class will run from 3.15 to 4.15 on a Tuesday afternoon in Room 10 with Ms McMillan. Classes will start next week, 5th March. The cost for the full year is \$50.00. The cost for Term 1 is \$10.00 as it is a shorter term. The cost of enrolling for Terms 2, 3 and 4 is \$15.00 a term. Please register your child's name for this class at the School Office. Term 1 payments are due now. The \$10.00 payment for this term must be paid by next Tuesday.

Stationery, Materials Fee and School Donation

Thank you to all parents who have purchased their children's stationery and paid the materials fee. If you have not already done so, can you please do so this week. If you are having difficulty in making payment, please contact the School Office. We do not have an EFTPOS facility. Payment can be made in cash, by cheque, or by internet payment directly into our school account: 12-3249-0084477-00. Please use your child's name as a reference.

- ▶ The Materials Fee covers the cost of photocopying resources and newsletters, as well as classroom resources provided by the school such as coloured pencils, crayons, felt pens, large rulers, pencil sharpeners etc. These costs are not optional as they are required to fund class activities.
- ▶ The School Donation requested by the Board of Trustees is \$25.00 per term (\$100.00 per year) for each child. The school donation may be paid on a term-by-term basis, but you may wish to pay in full prior to 31st March 2019 as a discount of \$10.00 will apply. This would reduce the annual donation to \$90.00 per child.

PTG News

- ▶ We had a great meeting last week. It was lovely to see some new faces. Welcome! We discussed some staff requests for funding. At this stage, we have agreed on:
 - * \$500 donation to the junior school to purchase sand/water play equipment, and woodwork tools.
 - * Purchase of a new pie warmer for the kitchen, which is used for the school lunch scheme. The old one is on its last legs and sometimes doesn't heat.
- ▶ **New entrant books:** We will be presenting books to this term's new entrants at assembly this Friday at 9.10am under the canopy.
- ▶ Calling for donations of craft supplies. The junior school want to set up a resource of craft items for creative play and exploring materials. We have a box in the staff room for you to drop off any items you may have unused at home. These can include (but are not limited to):
 - * Recycled picture frames with the back and glass insert removed
 - * Frameless mirrors
 - * Interesting mosaic tiles and pieces, glass gems, stones
 - * Rocks, pebbles, pine cones, seeds and pods
 - * Colourful wire, pipe cleaners, feathers
 - * Beads, buttons, sequins, string,
 - * Scraps of paper, even cut from old art projects, cards, envelopes
 - * Scraps of fabric, yarn, ribbon
 - * Potters clay
 - * Nuts, bolts, large screws
 - * Wooden craft sticks, scrap wood, spools
 - * Basically anything the kids can get creative with.
- ▶ **Community Picnic:** Wednesday, 13th March, 5.00-7.00 pm. The PTG will be selling pre-ordered pizza. Order forms will come home later this week.
- ▶ **Save the Date:** Friday, 29th March, for Term 1 Disco.
- ▶ **Next meeting: Thursday 14 March, 7.30pm**, in the staff room. All welcome.
- ▶ **Want to get in touch with us?** Please email ptg@silverdale.school.nz or join our facebook group "Friends of the PTG - SNS".

Each week at our assembly every class issues one class certificate.

We congratulate Miss Callie Qui on her acceptance in to the University Teacher Training qualification programme. We were very lucky to have Miss Qui at Silverdale Normal in 2018 working with some of our English Language Learners. We wish her all the best in her studies this year.



We warmly welcome Miss Vera Xu to our staff as one of our valued learning assistants. Miss Vera will be working alongside class teachers and the ESOL team especially assisting with our mandarin speaking students and their families. Miss Vera will be with us for this year.

Michael Harrop - Principal



Tumeke Performing Arts Company is proud to announce auditions for the Disney classic, The Lion King Jr. and we would LOVE to invite students aged 7-18 years to sign up for auditions (over the weekend of March 9-10).

The Audition Package is available for email from the Silverdale Normal School Office. All the information required to audition is included in the package.

The production is to be staged at Clarence Street Theatre in July 2019.

FREE EVENT

HAMILTON CHILDREN & FAMILIES TRUST presents

**HAMILTON
CHILDREN'S DAY**

HAPPY & HEALTHY HAUORA

Saturday 2 March 10am-2pm

Garden Place, Central Library, Caro St, Victoria on the River
and Waikato Museum (*free entry to Excite!*)

RIDES • ENTERTAINMENT • SPORTS ACTIVITIES

DIY FACE-PAINTING • CHALKFEST • LIBRARY TECH ZONE

INFLATABLES • CULTURAL PERFORMANCES

YOUTH ZONE @ VOTR • STALLS • PRIZES AND MORE!

Enjoy a fun family day out in our city. We have lots of tables so bring a picnic!

For full details on the **FREE** double decker bus from the Base to the Transport Centre,
or in the event of rain, check out [facebook.com/ChildrensDayCarnival](https://www.facebook.com/ChildrensDayCarnival)

BUSIT | **Excite!** | **Central Library** | **Waikato Museum** | **The Lion Foundation** | **Lifeline** | **perpetua**

St John Logan Campbell Secondary School | **southern trust** | **FELLISIAN** | **Waiuku Museum** | **MEL ANSOBY TRUST** | **EXHIBIT IT! GO IT WITH YOU IT SHOW**

Hamilton Children & Families Trust | **Trustees Executors** | **JEN PETERSON TRUST** | **THE LION FOUNDATION** | **LIFELINE** | **PERPETUA**